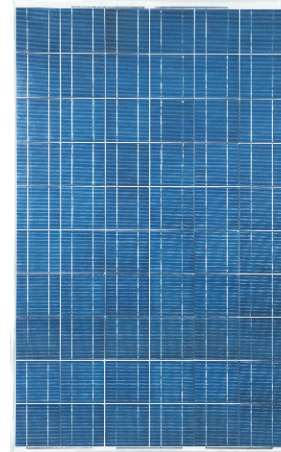


CS6P-200/210/220/230/240

CS6P is uniquely designed to provide high-power output for both on-grid and off-grid solar power plants. It is also tailored for people looking for maximum power output in a very limited space on commercial, industrial and residential roof-top solar power systems.



KEY FEATURES

- 60 high-efficiency polycrystalline solar cells
- Unique frame design to reinforce sealing and to prevent freezing and warping
- Strong aluminum frames to strengthen the load hold and to stand against high wind
- Special mounting holes on the frames for long and short side mounting
- High transparency low iron tempered glass with enhanced stiffness and impact resistance
- Advanced EVA encapsulation system with multilayer backsheets to better protect modules

APPLICATIONS

- Large on and off-grid solar power stations
- Commercial / industrial building roof-top systems
- Residential roof-top systems
- Rural electrification
- Other industrial and commercial applications

CERTIFICATIONS

Module Certificates

- IEC 61215, TUV Safety Class II, UL 1703, CE

Factory Certificates

- ISO 9001:2000, ISO/TS 16949:2002,
- QC 080000



* IEC 61215 Certified Models: CS6P-240P, CS6P-230P, CS6P-220P, CS6P-210P, CS6P-200P

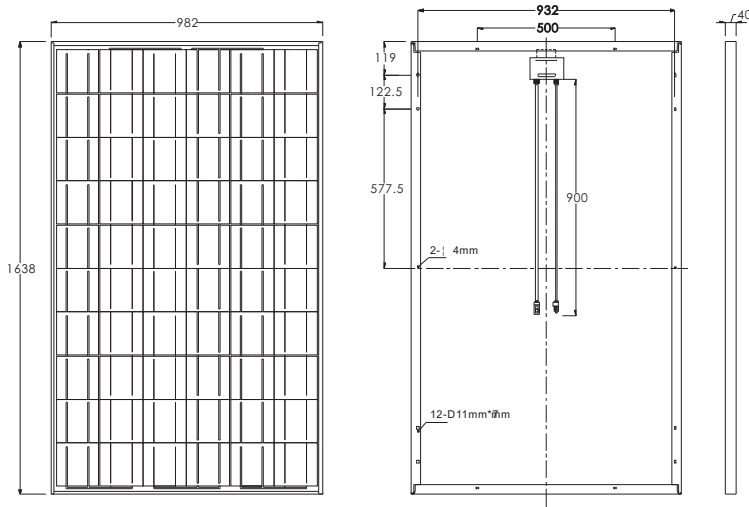
* TUV Safety Class II Certified Models: CS6P-240P, CS6P-230P, CS6P-220P, CS6P-210P, CS6P-200P

* UL 1703 Certified Models: CS6P-230, CS6P-225, CS6P-220, CS6P-215, CS6P-210, CS6P-205, CS6P-200

LIMITED WARRANTY

- 25 years limited warranty on power output
90% power output assurance for 10 years, and 80% power output assurance for 25 years .
Please refer to warranty statement for warranty conditions in detail.

Mechanical Specifications



| Dimensions | | |
|--------------------|------------|--|
| Length*Width*Depth | mm (in) | 1638 x 982 x 40 (64.5 x 38.7 x 1.6) |
| Weight | kg (lbs) | 18.5 (40.8) |

| Cells | |
|-----------------|-----------------|
| Cell Material | Polycrystalline |
| Number of Cells | 60 |

Electrical Characteristics

Electrical Performance

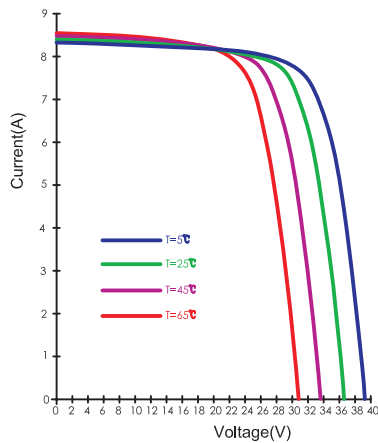
Under Standard Test Conditions (STC) of irradiance of 1000W/m², spectrum AM 1.5 and cell temperature of 25°C

| | | CS6P-200 | CS6P-210 | CS6P-220 | CS6P-230 | CS6P-240 |
|--------------------------|----------------------------|------------|----------|----------|----------|----------|
| Maximum Power | P _{max} | 200W | 210W | 220W | 230W | 240W |
| Voltage at Maximum Power | V _{mp} | 28.9V | 28.9V | 29.3V | 29.8V | 30.4V |
| Current at Maximum Power | I _{mp} | 6.93A | 7.26A | 7.52A | 7.71A | 7.91A |
| Open Circuit Voltage | V _{oc} | 36.2V | 36.4V | 36.6V | 36.8V | 37.0V |
| Short Circuit Current | I _{sc} | 7.68A | 7.91A | 8.09A | 8.34A | 8.61A |
| Maximum System Voltage | | 1,000V | | | | |
| Temperature Coefficient | Voltage (V _{oc}) | -0.35 %/°C | | | | |
| | Current (I _{sc}) | 0.060 %/°C | | | | |

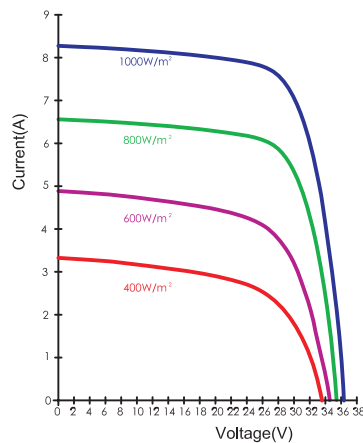
*NOCT (Normal Operating Cell Temperature): 45°C

**Module power tolerance: ±5W (approx. ±2.5%)

I-V Curves Under Different Temperatures, 1000W/m²



I-V Curves Under Different Irradiances; AM 1.5; 25°C



*Specifications included in this datasheet are subject to change without prior notice.